

Welcome to
LEAD CONFERENCE SHARE OUT 2023

The program will begin momentarily.



Cultural Access
Collaborative



Cultural Access Collaborative

We believe arts and culture are for everyone. Our mission is to empower Illinois' cultural spaces to become more accessible to visitors with disabilities.

4 Pillars:

- Professional Development
- Accessible Equipment Loans
- Access Calendar
- Network

CulturalAccessCollab.org

Program Accessibility

- Real-Time Captioning provided by Dillon Reporting Service
- ASL Interpretation provided by First Choice Interpreting
- Q&A for Question Submission
- Chats from hosts: Tech and Access Support

What is LEAD?

Leadership Exchange in Arts and Disability (LEAD®)



As an integral part of the Kennedy Center's Access/VSA International Network, the Leadership Exchange in Arts and Disability (LEAD) program advances the full inclusion of people with disabilities in arts and culture. With a focus on expanding the breadth and scope of accessible programming, LEAD provides an opportunity for professionals in the field to develop best practices and resources; engage in conversations with colleagues and experts from around the world; and learn practical methods for designing inclusive arts experiences and environments.

AccessLead.org

Today's Speakers



Susan Friel



Tina Childress



Ruben Carrazana



Zhen Heinemann

Radical Hospitality

Presented by Susan Friel (she/her/ella)

Education & Engagement Manager
Chicago Department of Cultural Affairs and Special Events



Radical Hospitality

Embracing an Environment of Welcoming & Belonging



“Please be Seated” initiative -
artist designed seating MoFA, Boston

Looks like:

- Abundance / not scarcity
- Ubiquitous ASL, captioning, audio description
- Movement and Food flow
- Disability acknowledgement proclaimed



Steps toward Radical Hospitality:

Accessibility, Advocacy, and Advisory Group

Reclaiming language “Neurospicy”

Being or having a “Disability Doula”



Susan Friel (she/her/ella)

Education & Engagement Manager

Chicago Department of Cultural Affairs and Special Events

Networking and Representing

Presented by Dr. Tina Childress (she/her/siya)

Audiologist | Late-deafened Adult | Advocate | Communication Access Engineer
tchildress@culturalaccesscollab.org





My presentations at LEAD:

1. Access Lab: Communication Apps
2. Foundations of Access: Deaf/Hard of Hearing
3. Auracast Broadcast Audio - The Future of Assistive Listening?
4. Wrap Up: Foundations of Access

- Networking
- Expanding my repertoire as an Accessibility Asset
- #RepresentationMatters



Implementations



Short-term

secure open captioning at a local theatre production on campus

build my networks

determine stakeholders

Long-term

expand CAC's reach

Equipment Loan Program in other parts of the state



Dr. Tina Childress (she/her/siya)
Audiologist | Late-deafened Adult | Advocate |
Communication Access Engineer

Accessibility in Live Theater

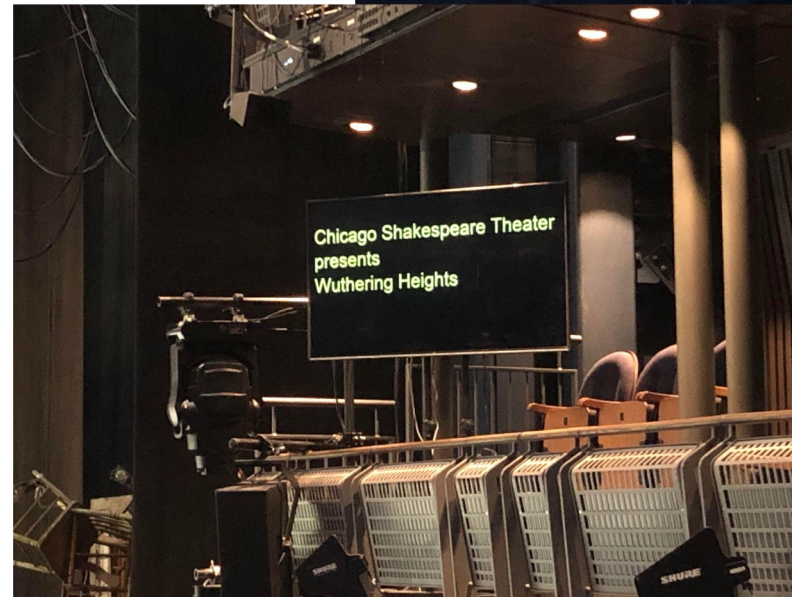
Presented by Ruben Carrazana (he/him/his)

Community Engagement Manager
Northlight Theatre



Captions

- Dismantle myths
- Multiple options for communication
- Consider ALL options for captions to determine what is best for your space



Audio Description

- Not an add-on
- Audio describer at every performance
- Expanding audio describer pool





Ruben Carrazana (he/him/his)

Community Engagement Manager

Northlight Theatre

The Admin of Access

Presented by Zhen Heinemann (they/them)

Director of Visitor Experience & Public Engagement
City of Chicago's Department of Cultural Affairs and Special Events





Accessibility Audits (data & research)

- Create a committee (with pay/incentive)
- Work with user experts
- Connect with local organizations for PWD
- Share your data
- Edit as you learn

Training

- Training Staff: Workplace inclusion, hiring, annual front of house trainings
- Training (informing) Audience: Know Before you Go & Visit experience / situation stories

Workplace Inclusion

- get a workplace Access Team together
- access for audience considered (know before you go)
- access for staff (deserve what need to work)
- training is tops **@ hire**
- + review those job applications

My presentations at LEAD

1. Mobile Engagement Carts (retrofit &/or create)
 - a. *(w/Susan & Bill!)
2. Affinity Groups: Cultural Access Knowledge Groups

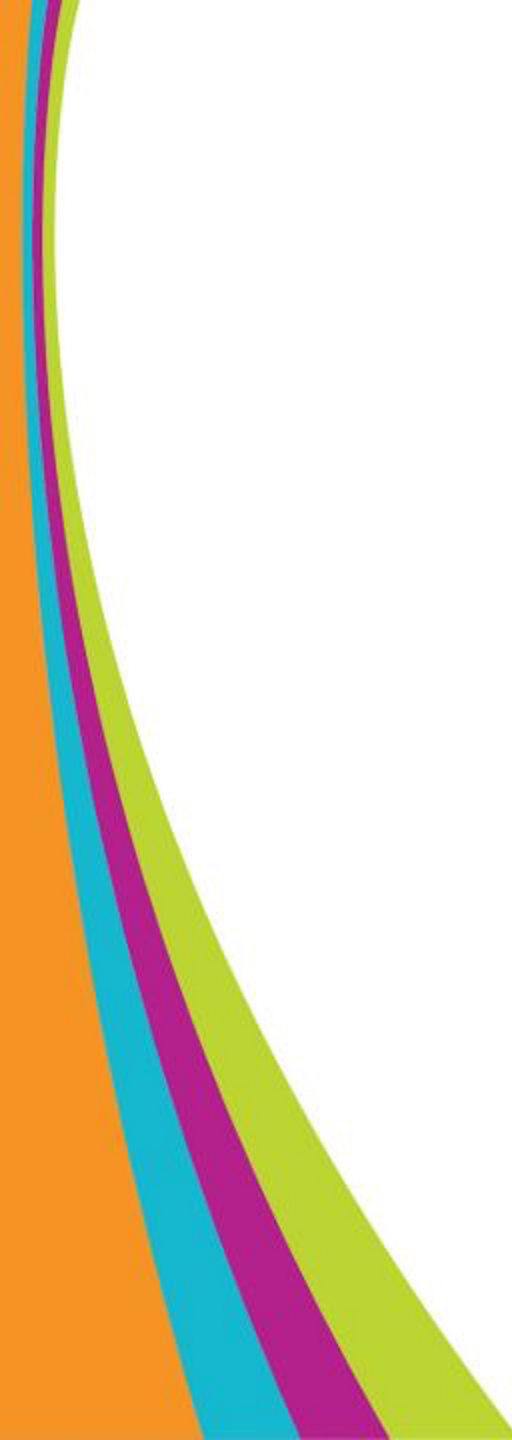


Zhen Heinemann (they/them)

Director of Visitor Experience & Public Engagement

City of Chicago's Department of Cultural Affairs and Special
Events

Let's hear from YOU!



Popcorn Session!



Bonus - ASL Salsa!



Salsa on the Boston Commons –
Kerry M. Thompson, Silent
Rhythms, Inc.

Open Space for Questions



Resources



<http://bit.ly/3t5U4Ne>



THANK YOU FOR JOINING US!