

Access to Cultural Venues

March 2015



You cannot discuss
accessibility in a vacuum.

You need context.

Changing Cultural Attitudes

Moral



Charity



Medical

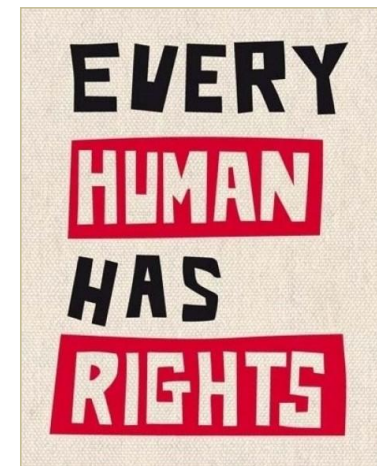


Rights



Changing Cultural Attitudes

- **Civil Rights:** Personal rights belonging to an individual because of status as a citizen or resident of a particular country or community. Typically conferred by law or custom.
- **Human Rights:** Rights we all have because we are human. These are: universal - apply to all people and inalienable - nobody can take your rights away





Changing Cultural Attitudes

New Definition of Disability

2011- The World Health Organization defined disability as a contextual variable.

A person with a functional limitation is more or less disabled based upon the intersection with the environment:

- ***Physical*** environment
- ***Communication*** environment
 - ***Information*** environment
- ***Social and Policy*** environments



Changing Demographics

56.7 Million American's with Disabilities

(2010 U.S. Census)

19 percent of the population — nearly 1 – 5 people in the U.S. have a disability

- **8 %** of children under 15 have disabilities.
- **21 %** of people 15 and older have disabilities.
- **17 %** of people 21 to 64 have disabilities
- **50 %** of adults 65 and older have disabilities.

As of 2008: 21 million adults have vision and 36 million have hearing loss,

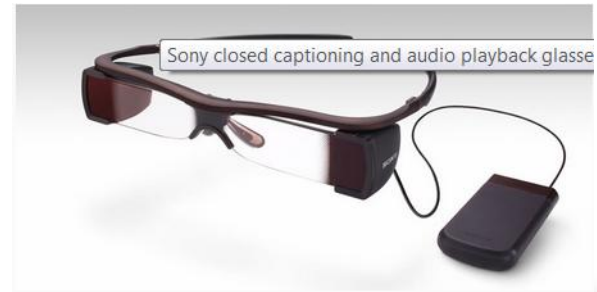
77.3 million Baby Boomers : In 2011 - The first of 77.3 million baby boomers turn 65 (approximately 25% of the total U.S. population)

By 2030 there will be more people over the age of 60 than under the age of 30

Changing Technology

“Emerging technologies have the potential to . . . provide . . . full, equal, and truly integrated access to American life. But cutting-edge technological advances also have the potential to leave people with disabilities behind . . .”

Eve L. Hill , Senior Counselor to the Assistant Attorney General for Civil Rights , Department of Justice, May 14, 2013



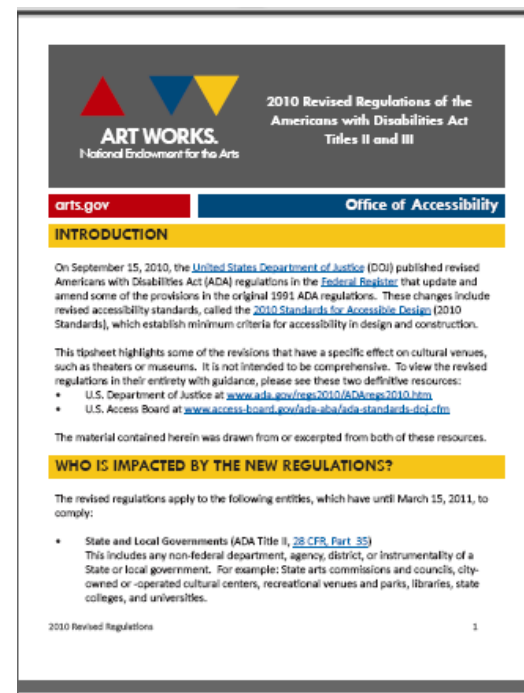


Federal Law and Regulation

- **1964 – Civil Rights Act**
- **1968 – Architectural Barriers Act**
- **1973 Rehabilitation Act**
- **1990 Americans with Disabilities Act**

2010 Revised Regulations Highlights

1. Service Animal
2. Mobility Device
3. Ticketing
4. 2010 Standards
5. Safe Harbor
6. Reduction of Elements



National Endowment for the Arts Tip Sheet for cultural venues at:
<http://arts.gov/sites/default/files/NEA-ADA-TipSheet-v2.pdf>



Accessibility as an Organizational Asset

Why Do it

- One : Legal Requirement
- Two: Good Business Sense
- Three Organizational Mission
- Four: Right Thing To Do
- Five: Selfish

Human **diversity of age and ability** has never been greater and is expected to **increase steadily** over the next 40 years.



More than a Ramp

Access needs to be:

- An integrated and intrinsic value of the organization
- Viewed as good customer services and part of the business of doing business
- An institutional asset

Why Plan?

The best reason I've found:

The process gives organizations the opportunity to undertake a cycle of continuous improvement in relation to access and gives them an opportunity to add value and increase their impact.*

**Arts Access Australia*

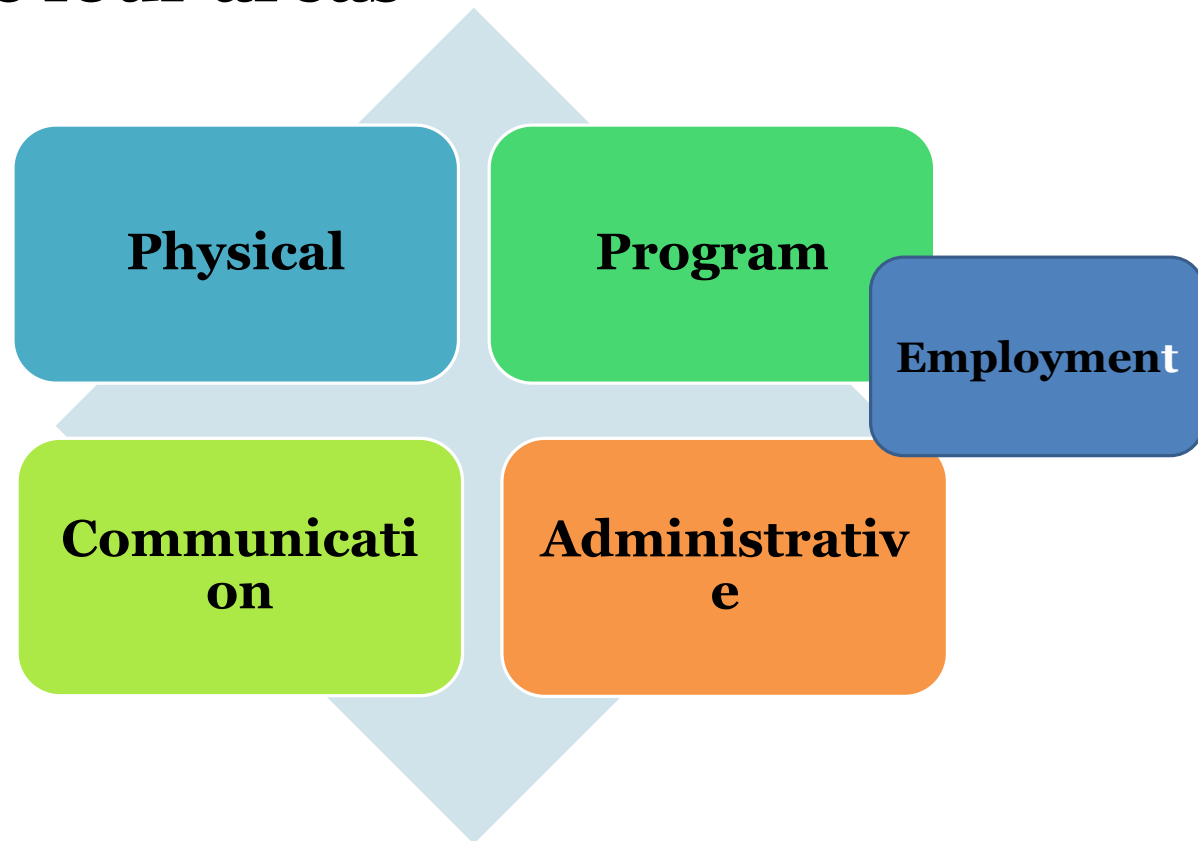


An Accessibility Plan

**Outlines
a simple approach to
how your organization
intends to proceed
with becoming more accessible to
people with disabilities.**

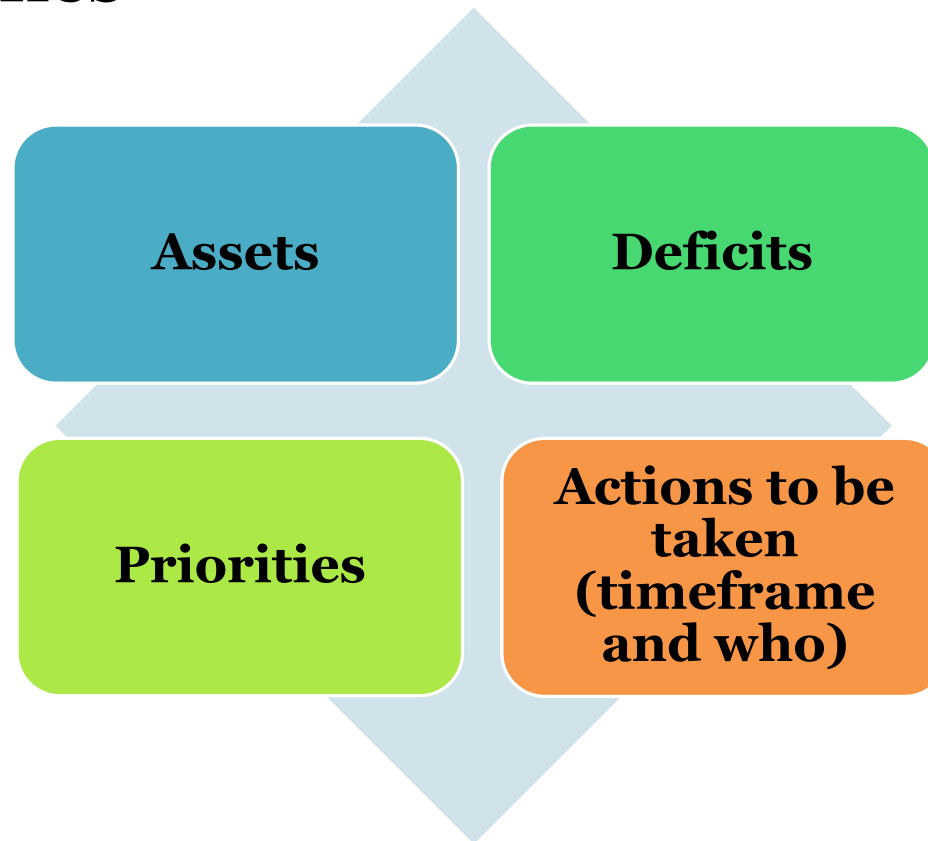
An Accessibility Plan

Covers four areas



An Accessibility Plan

Identifies





An Accessibility Plan

**Recognizes the diversity
of needs within the
disability community**

**Integrates access into
the fabric of the
organization**

An Accessibility Plan

**Takes into
consideration the
organizations unique
situation and circumstance**



One Size Does Not Fit All



Most importantly it respects

**The need to independently
and with dignity**

Get to

Get in

Get around

and to

**meaningfully participate in and
engage with
content and programs**

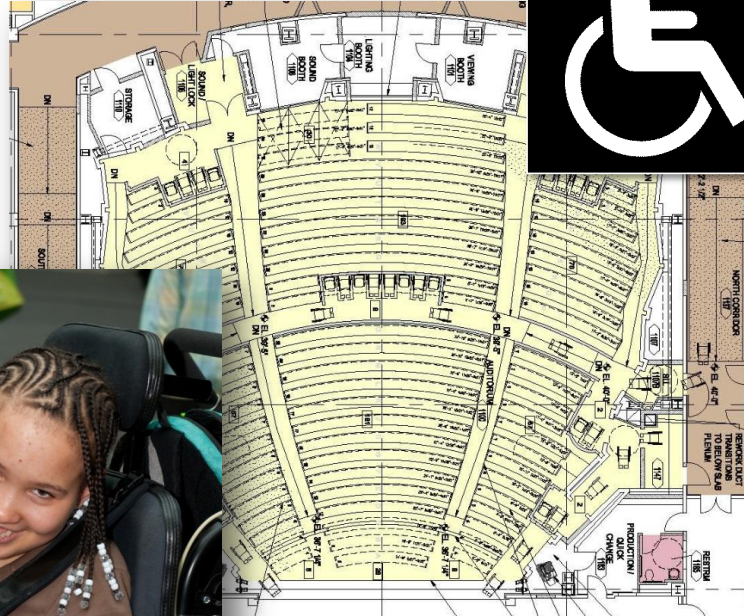
Planning for Accessibility Cycle





Accessibility Fundamentals

Physical Accessibility



Assistive Listening

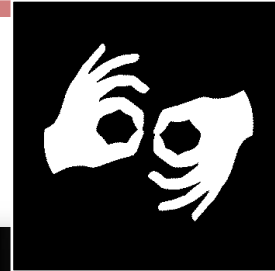


Open Captioning

OC



Sign Language Interpretation



Audio Description

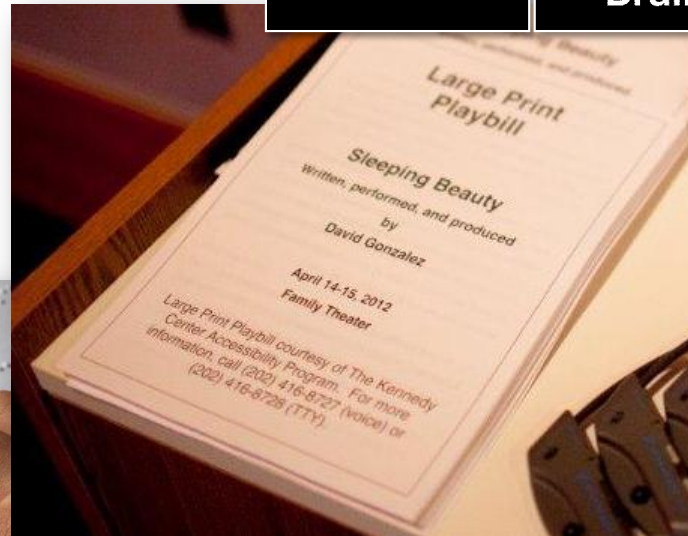
AD)))



Alternate Format

Large
Print

● ●
● ●
● ●
Braille



Sensory-Friendly Performances



Sensory-Friendly Performances

Cuesheet Performance Guides

Sensory-friendly performances are designed to create a performing arts experience that is welcoming to all families with children with autism or with sensory sensitivities. For more information, visit the Kennedy Center's [sensory-friendly information page](#).

CUESHEET



Elephant and Piggie's We Are in a Play
Join best friends Elephant Gerald and Piggie in a musical adventure ripped from the pages of your favorite books

CUESHEET



NSO Teddy Bear Concerts
The youngest of music lovers (and their favorite stuffed animal) join in fun, interactive performances with musicians

CUESHEET



NSO Kinderkonzert: Peter and the Wolf
Peter is a very brave boy, but for a hungry

CUESHEET



Jason Invisible
This play humanizes people dealing with less than perfect families and celebrates the power of friendship

CUESHEET

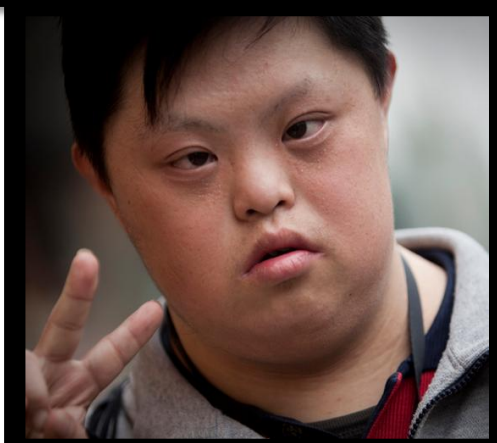


NSO Kinderkonzert: Musical Opposites
Join musicians from the National Symphony Orchestra to explore how musical opposites make music to our



True) of Homer P.
ld boy saves r at the Battle nd then helps

Who -You, Me, Us



Resources

U.S. Department of Justice (DOJ) www.ada.gov

- Revised Regulations: www.ada.gov/regs2010/ADAREgs2010.htm
- 2010 Standards: www.ada.gov/2010ADASTandards_index.htm
- Tech. Assistance: (800) 514-0301 (voice) or (800) 514-0383 (TTY)

U.S. Access Board www.access-board.gov

ADA Centers National Network www.adata.org/Static/Home.aspx

National Endowment for the Arts www.nea.gov/resources/accessibility/index.html

Smithsonian Accessibility Program

- www.si.edu/accessibility

Kennedy Center Office of VSA and Accessibility

- www.kennedy-center.org/education/home.html?detailheader=Access
LEAD Resources
www.kennedy-center.org/accessibility/education/lead/resources.html

NOTE: Look carefully at the date on all resource materials. Older materials (pre-2008 and pre-2010) may have legal information, definitions of disability, and accessibility design standards that are out-of-date. If you are looking at issues of physical access, be sure you are using the correct Standards of Accessible Design (found at www.access-board.gov)



Betty Siegel
Director of VSA Accessibility
The John F. Kennedy Center for the Performing Arts
(202) 416-8727
access@kennedy-center.org

Disclaimer

Information contained in this presentation is for general guidance. The information in this presentation is not intended to be legal advice nor a rendering of legal advice, opinion or services. Recipients should consult with their own professional legal advisor.